



2019

ACMRS & MAP JOINT CONFERENCE



Magic, Religion, and Science in the Global Middle Ages and Renaissance



EMBASSY SUITES PHOENIX-SCOTTSDALE
6-9 FEBRUARY 2019 • PHOENIX, ARIZONA

2019
ACMRS & MAP JOINT CONFERENCE
**Magic, Religion, and Science
in the Global Middle Ages and Renaissance**

EMBASSY SUITES PHOENIX–SCOTTSDALE
6–9 FEBRUARY 2019 • PHOENIX, ARIZONA

Jointly hosted by



Arizona Center
for Medieval &
Renaissance Studies

ARIZONA CENTER FOR MEDIEVAL AND RENAISSANCE STUDIES

ACMRS Staff

Ayanna Thompson
Director

Susan J. Dudash
Assistant Director

Roy Rukkila
Managing Editor

Leah Newsom
Outreach Coordinator

Todd Halvorsen
*Manager of Design and
Production*

Angela Schrader
Business Operations Specialist

ACMRS Advisory Board

Fabian Alfie
University of Arizona

Markus Cruse
Arizona State University

Bradley Ryner
Arizona State University

Hannah Barker
Arizona State University

Cora Fox
Arizona State University

Anne Scott
Northern Arizona University

Meg Lota Brown
University of Arizona

Ryan A. Kashanipour
Northern Arizona University

Stefan Stantchev
Arizona State University

MEDIEVAL ASSOCIATION OF THE PACIFIC

MAP Staff

John S. Ott
President
Portland State University

Arlene Sindelar
Vice President
University of British Columbia

Edward M. Schoolman
Treasurer
University of Nevada, Reno

Anthony Perron
Secretary
Loyola Marymount University

Heather Maring
Media Officer
Arizona State University

MAP Councilors

Heather Blurton
*University of California,
Santa Barbara*

Maile Hutterer
University of Oregon

Catherine Saucier
Arizona State University

Michael Calabrese
*California State University,
Los Angeles*

Sarah-Nelle Jackson
University of British Columbia

J.A.T. Smith
Pepperdine University

Sarah Davis-Secord
University of New Mexico

Leila Kate Norako
University of Washington

Elsbeth Whitney
University of Nevada, Las Vegas

Robert Rouse
University of British Columbia

Miranda Wilcox
Brigham Young University

Anna Harrison
Loyola Marymount University

WELCOME LETTER



Arizona Center
for Medieval &
Renaissance Studies

Arizona State University
P.O. Box 874402
Tempe, AZ 85287-4402
Tel 480-965-5900
Fax 480-965-1681
www.acmrs.org

Dear Colleagues,

Welcome to ACMRS's 25th annual interdisciplinary conference. We are thrilled to partner with MAP this year.

It's an exciting time at ACMRS, and we hope you will consider returning to Arizona to attend our extended programming throughout the year.

We especially hope you will submit a paper or panel for next year's conference on "**Unfreedom**."

More information can be found in the Call For Papers in your registration folder.

All best,

A handwritten signature in black ink, appearing to read 'Ayanna' followed by a stylized flourish.

Ayanna Thompson
Director, ACMRS
Arizona State University

ACMRS • Arizona State University • P.O. Box 874402 • Tempe, AZ 85287-4402 • www.acmrs.org

ACKNOWLEDGMENTS

ACMRS would like to thank the following sponsors for their generous financial support of this conference:

- School of International Letters and Cultures (ASU)
- Department of English (ASU)
- The College of Liberal Arts and Sciences (ASU)
- Hispanic Research Center (ASU)
- School of Transborder Studies (ASU)

Finally, our appreciation goes out to the staff at the Embassy Suites Phoenix-Scottsdale Hotel and the many ACMRS volunteers whose assistance is invaluable to the success of this conference.

General Information

Conference Hotel: Embassy Suites Phoenix-Scottsdale, 4415 E. Paradise Village Parkway South, Phoenix, AZ. 85032 Phone: 800-362-2779 (toll free), 602-765-5800 (local); Fax 602-765-5890; www.embassysuites.com.

Your suite includes a complimentary breakfast each morning and a manager's happy hour in the evening from 5:30–7:30PM.

Conference Registration: Everyone attending the 2019 Joint ACMRS and MAP Interdisciplinary Conference must register either through the ACMRS website or in person on site. Late registrants may still register online for the added late fee of \$50. Registration payment by credit card or check will be accepted.

The registration table will be open Wednesday from 8:00AM–6:00PM; Thursday and Friday, 8:00AM–5:30PM; and Saturday, 8:00AM–4:00PM in the foyer of the conference area. Conference packets are available only at the registration table.

Transportation to the hotel and parking: Phoenix Sky Harbor airport is serviced by most major airlines. The hotel is approximately 12.5 miles (20 minutes) from the airport. Uber/Lyft rates for trips from the airport to the hotel begin under \$25. Taxi cab fare from the airport to the hotel is approximately \$50–\$60 and Super Shuttle (shared van service) is approximately \$21 (www.supershuttle.com) per person. The hotel also offers airport transfer services through Blasian Transportation (luxury town cars starting at \$63 for two people. Reservations required, 602-466-3351 or www.blasianllc.com).

GENERAL INFORMATION

Directions from Sky Harbor Airport: Take I-10 West for one mile and turn north on State Route 51. Take SR 51 north for nine miles to Exit 10. Get off SR 51 and turn right at Cactus Road. Drive 1¼ miles to Paradise Village Parkway and turn right. The hotel is ¼ mile on Paradise Village Parkway on the right.

Directions from the North: Take I-17 South to the Thunderbird exit and turn left. Go east on Thunderbird until it turns into Cactus Rd. Continue east on Cactus for 8 miles and turn right onto Paradise Village Parkway. The hotel is on the right, ¼ mile down.

Directions from Scottsdale: Take Scottsdale Rd. north to Shea Blvd., turn left onto Shea, and go 4 miles to Tatum Road. Turn right on Tatum and drive 1 mile to Paradise Village Parkway. Turn left onto Paradise Village Parkway and the hotel is 200 yards on the left.

Parking at the hotel is complimentary for all.

Welcome Reception will be held in the *Tatum's Restaurant* and the *West Pool Patio* Wednesday 6:30–8:30PM.

Session Locations: All sessions will be held in the Embassy Suites Phoenix-Scottsdale Hotel adjacent to registration and the book exhibit room. See the hotel map printed on page 6 of this program for details.

Book Exhibit: Booksellers will display their publications Thursday and Friday, 8:00AM–5:30PM and Saturday, 8:00AM–4:00PM in the *Painted Mountain Ballroom A*. (The book exhibit will not be open on Wednesday)

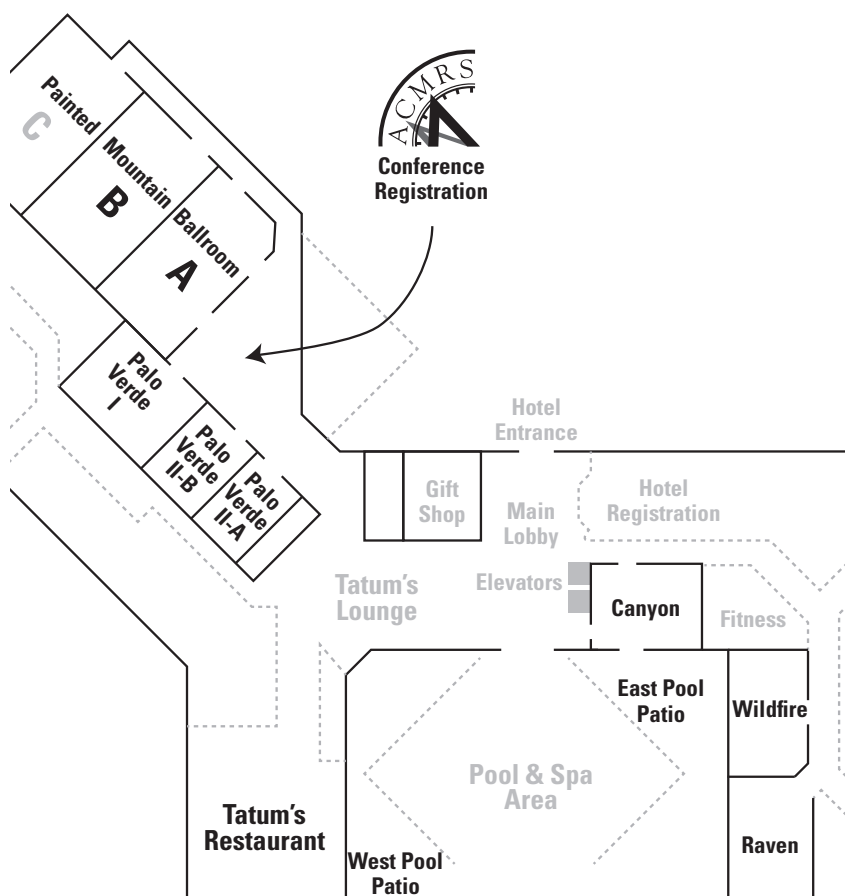
Beverage Service: Refreshments will be provided in the *Painted Mountain Ballroom A* Thursday, Friday, and Saturday beginning at 8:00AM and during the morning break at 10:30AM and the afternoon break at 3:30PM.

Farewell Reception will be held in the *Canyon Room* and the *East Pool Patio* on Saturday 6:30–8:30PM.

Daily Hotel Happy Hour: The Embassy Suites Phoenix-Scottsdale features a complimentary happy hour each evening from 5:30–7:30PM. Conference attendees who are staying at the hotel are welcome to attend. Attendees who are not staying at the hotel are not eligible.

Program Schedule: All items are included with conference registration except where noted.

CONFERENCE SESSIONS MAP



WEDNESDAY, 6 FEBRUARY

Conference Registration

9:00AM–6:00PM

Pre-Conference Workshop A

1:00–2:15PM

A. Professionalization Workshop

Wildfire

- Elizabeth Grumbach, Assistant Director, Institute for Humanities Research, Arizona State University
- Susan J. Dudash, Assistant Director, ACMRS, Arizona State University
- Ayanna Thompson, Director, ACMRS, Arizona State University
- Seonaid Valiant, Curator for Latin American Studies, ASU Library, Arizona State University

Pre-Conference Workshop B

1:00–5:00PM

B. The Medieval Manuscript Workshop (*additional registration fee required)

Palo Verde I

- Dr. Timothy Graham, Director of the Institute for Medieval Studies and Professor of History at the University of New Mexico

Hotel Happy Hour

(for registered hotel guests only)

5:30–7:30PM

Tatum's Lounge

Welcome Reception

(hors d'œuvres and open bar)

6:30–8:30PM

Tatum's Restaurant/West Patio

No Beverage Service on Wednesday

FINAL DRAFT.
PROGRAM WILL BE AVAILABLE FOR DOWNLOAD AFTER THE CONFERENCE.

THURSDAY, 7 FEBRUARY

Session One

9:00–10:30AM

1A. Pedagogy, Preservation, and Access

Palo Verde I

SPONSORED BY: Renaissance Knowledge Network (ReKN)

CHAIR: Ray Siemens, *University of Victoria*

Literacy and Learning in Latin and Vernacular Schools in the Veneto (1400–1545) through the Lens of Digital Humanities

■ Francesca Masiero, *University College London*

The Immortal *Rulers of Venice*: Long-term Strategies for Historical Data Preservation and Access

■ Monique O’Connell and Carrie Johnston, *Wake Forest University*

Leadership through Collaboration: The Shared Initiatives of ACMRS, Iter, and ReKN

■ William Bowen, *University of Toronto, Scarborough*

1B. Race and Religion

Painted Mountain Ballroom B

CHAIR: Souad T. Ali, *Arizona State University*

Race, Class, and Religion in Gottfried von Strassburg’s *Tristan*

■ Robert Sturges, *Arizona State University*

“that fantastic glass”: Glass Imagery and Religious Otherness in the *Duchess of Malfi* and *Albumazar*

■ Laura Schechter, *University of Alberta*

“Black Takes No Other Color”: Empiricism, Religion, and the Evolution of Ideologies of Exclusion

■ Jennifer Bess, *Goucher College*

THURSDAY, 7 FEBRUARY

Session One

9:00–10:30AM

1c. Textual and Linguistic Transformation in Medieval Scandinavia

Raven

CHAIR: Daniel Najork, *Arizona State University*

Transforming the Werewolf: *Bisclavret's* Textual Transmission and Reception in Thirteenth- to Fifteenth-Century Scandinavia

■ Basil Price, *Arizona State University*

The Magical Other: The Marginalization of Magical Women in the *Íslendingasögur*

■ Tristan Rebe, *Arizona State University*

Morning Break

10:30–10:45AM

ACMRS JOURNALS

ACMRS proudly publishes the following scholarly journals. For subscription information for you or your home institution see the inserts in your conference packet or visit our website at acmrs.org/journals



Early Modern Women
AN INTERDISCIPLINARY JOURNAL

STUDIES IN MEDIEVAL AND RENAISSANCE HISTORY



LABERINTO

**ANNALI
D'ITALIANISTICA**

Morning Beverage Service: 8:00–10:15AM, Painted Mountain Ballroom A

FINAL DRAFT.

PROGRAM WILL BE AVAILABLE FOR DOWNLOAD AFTER THE CONFERENCE.

THURSDAY, 7 FEBRUARY

ACMRS Plenary Lecture

10:45AM–12:15PM

ACMRS Plenary Lecture

Painted Mountain Ballroom B

WELCOME: Ayanna Thompson, *Director, ACMRS, Arizona State University*

INTRODUCTION: Ryan A. Kashanipour, *Northern Arizona University*

Virtuosity at Work: Elias Ashmole and the Alchemist as Priest of Natural Philosophy

■ Bruce Janacek, *North Central College*

Lunch on Your Own

12:15–2:00PM

Session 2

2:00–3:30PM*

**Please Note: Session 2B begins at 1:45PM*

2A. Uses and Abuses of EEBO-TCP (A Digital Humanities Plenary Style Panel)

Palo Verde I

SPONSORED BY: Renaissance Knowledge Network (ReKN)

CHAIR: Ray Siemens, *University of Victoria*

Vapour of a Dungeon: Uses and Abuses of EEBO-TCP

■ Jonathan Hope, *Arizona State University*

THURSDAY, 7 FEBRUARY

Session 2

2:00–3:30PM*

*Please Note: Session 2B begins at 1:45PM

2B. No Future? Medieval and Early Modernists, Interdisciplinarity, and the Challenges of STEM (*begins at 1:45PM)

Painted Mountain Ballroom B

SPONSORED BY: The Medieval Association of the Pacific (MAP) and the Australian and New Zealand Association of Medieval and Early Modern Studies (ANZAMEMS)

CHAIRS: John S. Ott, *Portland State University*, and Chris Jones, *University of Canterbury, New Zealand*

How Medievalists Can be Relevant in the 21st-Century Classroom

■ Michael Calabrese, *California State University, Los Angeles*

Social Responsibility and the Medieval Historian

■ Anthony Perron, *Loyola Marymount University*

Who Should Lead in Formulating Research Agendas in STEM-History
Collaboration? A Paleocology Case Study

■ Edward M. Schoolman, *University of Nevada, Reno*

Tech and Text in the Liberal Arts: Weaving New Curricular Patterns

■ J.A.T. Smith, *Pepperdine University*

Following the Money: Medieval and Early Modern “STEAM”, and Engaging
Beyond the Academy

■ Louise D’Arcens, *Macquarie University*

Perspectives on Auckland’s “BA Renewal” Project and Its Implications for
Medieval and Early Modern Teaching and Scholarship

■ Lindsay Diggelmann, *University of Auckland*

The Future is Bright (if we choose to make it so)

■ Simone Marshall, *University of Otago*

BREXIT, STEM, & Employability—A Perspective from the UK

■ Natasha Hodgson, *Nottingham Trent University, UK*

THURSDAY, 7 FEBRUARY

Session 2

2:00–3:30PM*

**Please Note: Session 2B begins at 1:45PM*

2C. Reading Between the Lines: *Beowulf*

Raven

CHAIR: Angela Schrader, *Arizona State University*

Object Permanence: Re-Evaluating Women and (Other) Things in *Beowulf*

■ Sara Burdorff, *University of California, Los Angeles*

Words of Purification and Ritual in the *Beowulf* Manuscript

■ Andrew Clapham, *Seton Hall Preparatory School*

Afternoon Break

3:30–3:45PM

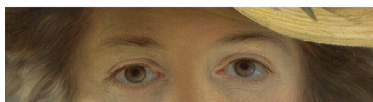
*Please join ACMRS and The Folger Shakespeare Library
in Washington, DC for part two of the groundbreaking symposium*



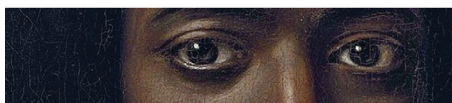
Race before Race 2

September 5–7, 2019

Washington, DC



*details available this
spring at acmrs.org/rbr2*



Folger SHAKESPEARE
LIBRARY

THURSDAY, 7 FEBRUARY

Session 3

3:45–5:15PM

3A. Diplomacy: Idioms and Intrigue

Palo Verde I

CHAIR: Jessica Lynn Wolfe, *University of North Carolina, Chapel Hill*

Communication of Linguistic Idioms in Aeneas Sylvius Piccolomini's
Account of His Mission to Bohemia (1451)

■ Daniel Nodes, *Baylor University*

History, Poetry, and the Visconti Connection: England and Milan in the Late
Fourteenth Century

■ Patricia Price, *California State University, San Marcos, emerita*

Richard Hakluyt's Secret France, 1583–1588

■ James Helfers, *Grand Canyon University*

3B. Sensory Experiences

Painted Mountain Ballroom B

CHAIR: C. Anne Laskaya, *University of Oregon*

Sensology, Aristotelian Biology, and the Insensate in *Troilus and Criseyde*

■ Richard Newhauser, *Arizona State University*

Otherworldly Optics: Ocular Theory and Faith in the 12th Century

■ Cordelia Ross, *University of Alabama*

How "Sweet" It Was?

■ Marjory Lange, *Western Oregon University*

THURSDAY, 7 FEBRUARY

Session 3 3:45–5:15PM

3c. Female Saints Revisited

Raven

CHAIR: Heather Maring, *Arizona State University*

Acting Manfully: St. Genovefa of Merovingian Paris and Her Inherent Threat to Male Authority

■ Stephanie Violette, *University of California, San Diego*

Middle Practices and Saint Margaret of Antioch: Between Magic, Miracle, and Prayer

■ Rachel Emling, *Arizona State University*

Sacred Mother Tongue in *Mary of Egypt*

■ Jenessa Kenway, *University of Nevada, Las Vegas*

3d. Religious Networks and Identities

Wildfire

CHAIR: Anthony Perron, *Loyola Marymount University*

Children of Kings, Wives of Christ: East Anglian Abbesses and their Irish Connections

■ Jessica Brown, *Adams State University*

Familial Ties, Clerical Identity, and Episcopal Patronage in Sixteenth-Century Iceland

■ Elizabeth Swedo, *Western Oregon University*

Religious Styles in Seventeenth-Century Borderlands: The Case of the Augustinians at L'Osier

■ Matthew Rivera, *Independent Scholar*

MAP Council Meeting

(by invitation only)

5:30–7:30PM

Painted Mountain Ballroom B

FRIDAY, 8 FEBRUARY

Session 4

9:00–10:30AM

4A. Arms and the Warrior

Palo Verde I

CHAIR: Tristan Rebe, *Arizona State University*

Peace, Popular Empowerment, and the First Crusade

■ Jason MacLeod, *New England College; Park University*

Reconciling the Uncanny: Forgiveness, *Caritas*, and Compassion for Malory's Palomides

■ Annie Narver, *Boise State University*

Brothers in Arms: Trading Technologies of Violence between Early Modern Europe and Japan

■ Paul Hartle, *St. Catharine's College, University of Cambridge*

4B. Science and Healing

Painted Mountain Ballroom B

CHAIR: Jennifer Bess, *Goucher College*

Hidden Virtues, Occult Qualities: Consonance and Correspondence in Global Medieval and Renaissance Worldviews

■ George Sieg, *Southwestern Indian Polytechnic Institute*

"Like a Troubled Ocean": Passions vs. Will in *The Rape of Lucrece*

■ Andrew Stesienko, *University of New Hampshire*

FRIDAY, 8 FEBRUARY

Session 4

9:00–10:30AM

4C. Seeing Beneath the Surface: Italy

Raven

CHAIR: Edward M. Schoolman, *University of Nevada, Reno*

Mediating the Surface: Icon Embellishment in Rome

■ Kirstin Noreen, *Loyola Marymount University*

Seeing through a Veil Dimly: Magdalenian Vision and the Promise of Salvation in the Isenheim *Crucifixion* (c. 1516)

■ Jerry Marino, *Independent Scholar*

Alchemy and the *Stanza della Signatura*: “As Above, So Below”

■ Robert Huber, *Temple University, Rome*

4D. Teach Magic, Fight Superstition: The Dangerous Liaisons between Education, Religion, and the Occult in Renaissance Europe

Palo Verde II-A

CHAIR: Scott Hendrix, *Carroll University*

The Licit and Illicit Teaching of Astrology and Talismanic Magic in Late Medieval Universities

■ Margaret Gaida, *University of Oklahoma*

Education, Religion and Superstition: The Action of the Society of Jesus in Some Rural Centers of Northern Italy (16th Century)

■ David Salomoni, *University of Rome III*

Jokes of Nature, Jokes of Theology: The Jesuits, Natural Magic, and Optical Illusions

■ Brent Purkapple, *University of Oklahoma*

FRIDAY, 8 FEBRUARY

Session 4

9:00–10:30AM

4E. The Magical Mammal in Marie de France

Palo Verde II-B

SPONSORED BY: International Marie de France Society/Société internationale Marie de France (IMFS)

CHAIR: Jillian Sutton, *California State University, Long Beach*

The Magical Amplexus between the Mouse and the Frog

■ Alma Valencia-Escobar, *San Diego State University*

Were-love in Marie de France's *Bisclavret*

■ Jason Thames, *California State University, Long Beach*

4F. Codicology

Wildfire

CHAIR: Patricia Price, *California State University, San Marcos*

The Medieval and Renaissance Dream Dictionary in the Libraries of Dante, Petrarch, Boccaccio, and Leonardo da Vinci

■ Valerio Cappelletto, *University of Mississippi*

Heraldry, Political Iconography, and Devotional Writing: Reading BNF manuscript français 2456

■ Michael Hanly, *Washington State University*

A Method for Dating Reginald Pecock's Lost Works

■ J.A.T. Smith, *Pepperdine University*

Morning Break

10:30–10:45AM

FRIDAY, 8 FEBRUARY

MAP Plenary Lecture

10:45AM–12:15PM

MAP Plenary Lecture

Painted Mountain Ballroom B

WELCOME: Jeffrey J. Cohen, *Dean of Humanities, College of Liberal Arts and Sciences, Arizona State University*

INTRODUCTION: John S. Ott, *Portland State University*

Medieval Death: Religious, Scientific, and Magical Approaches

■ Nancy Caciola, *University of California, San Diego*

Lunch on Your Own

12:15–2:00PM

Session 5

2:00–3:30PM

5A. Crime and Punishment

Palo Verde I

CHAIR: Hannah Barker, *Arizona State University*

The Role of English Bishops in the Prosecution of the Templars

■ Henry Ansgar Kelly, *University of California, Los Angeles*

Burning Women in Medieval England: The Execution of Felonious Women in the Courts of Common Law

■ Arlene Sindelar, *University of British Columbia*

The Malleus Maleficarum: Rationalism vs. Superstition?

■ Alexandra W. Albertini, *University of Corsica*

FRIDAY, 8 FEBRUARY

Session 5

2:00–3:30PM

5b. Frontiers of Thought

Painted Mountain Ballroom B

CHAIR: Jonathan Hope, *Arizona State University*

Edward Gresham's *Astrostereon*, or How Can One Understudied Manuscript Affect Several Overstudied Fields?

■ Jarosław Włodarczyk, *Polish Academy of Sciences*

Religion, Philosophy, and Magic in the Thought of Yohanan Alemanno

■ Andrew Gluck, *Independent Scholar*

Agrippa's Renaissance: Magic, Natural Philosophy, and Divine Intention in *De occulta philosophia libri tres*

■ Allison Kavey, *City University of New York/CUNY, John Jay College and CUNY Graduate Center*

5c. Reading and Rhetoric

Raven

CHAIR: Michael Calabrese, *California State University, Los Angeles*

John Gower's Magical Rhetoric

■ Georgiana Donavin, *Westminster College*

A "doctryne of charite": Theology and the Self in the Morality Play of *Wisdom*

■ Katie Jo LaRiviere, *University of Oregon*

Journeys End in Lovers Reading: Anagram, Ekphrasis, and Literacy in *The Squire of Low Degree*

■ Katherine McLoone, *California State University, Long Beach*

FRIDAY, 8 FEBRUARY

Session 5 2:00–3:30PM

5D. Old Norse Text and Practice

Palo Verde II-A

CHAIR: Basil Price, *Arizona State University*

Atheism in the Old Norse Sagas

■ Claudia Tomany, *North Dakota State University*

Documentary Drama in the Medieval Norse Church

■ Joel Anderson, *University of Maine*

The Magic of Coloring Books in Medieval Public Outreach: An Alt-Academic Tale

■ Dayanna Knight, *Independent Scholar*

5E. Religion and Violence: From Spain to the Americas

Palo Verde II-B

CHAIR: Bretton Rodriguez, *University of Nevada, Reno*

Religion and Sex Crimes in Baroque Spain: The *Ave Maria* as Alibi in *His Wife's Executioner* by Maria de Zayas

■ Bradley Nelson, *Concordia University*

The Myth of the Amazons in Medieval Spain

■ Isidro Luis Jimenez, *University of Arizona*

The Mystification Process in *Naufragios*, Chronicle of Alvar Nuñez Cabeza de Vaca about the Southwest

■ Mariana Ruiz Gonzalez Renteria, *Arizona State University*

Afternoon Break

3:30–3:45PM

FRIDAY, 8 FEBRUARY

Session 6

3:45–5:15PM

6A. Sacred and Dramatic Spaces

Palo Verde I

CHAIR: Catherine Saucier, *Arizona State University*

Charms and Ligatures in the York Cycle

■ Denise Despres, *University of Puget Sound*

Carving Out Safe Spaces: Understanding Apotropaic Graffiti in English Parish Churches

■ Crystal Hollis, *Independent Scholar*

The Distinction between Sacred Space and Sacred Place and Their Musics

■ William Mahrt, *Stanford University*

6B. Wondrous Women: Empowerment through Monstrosity

Painted Mountain Ballroom B

SPONSORED BY: The Medieval and Renaissance Student Association at California State University, Long Beach, and Monsters: the Experimental Association for the Research of Cryptozoology through Scholarly Theory and Practical Application (MEARCSTAPA)

CHAIR: Jillian Sutton, *California State University, Long Beach*

“They Blink and Reality Shivers”: Hybridity in Hagiography: St. Margaret’s Monstrous Divinity

■ Elisabeth Oliver, *California State University, Long Beach*

A Monstrous Manliness: How Female Saints Transcend Gender by Defying It

■ Maitlyn Reynolds, *California State University, Long Beach*

FRIDAY, 8 FEBRUARY

Session 6 3:45–5:15PM

6c. The Lyric of Propaganda and Passage

Raven

CHAIR: John S. Ott, *Portland State University*

‘redy to spende there blode and lyf ayenst turk sarazins and other Infidelis’:
Hospitaller Sermons, Crusading, and the English Reformation, c. 1440–1540

■ Rory MacLellan, *University of St. Andrews*

“God has started a tournament between Hell and Paradise”: Religious
Propaganda in the Crusade Songs of Troubadours and Trouvères

■ Victoria Choin, *Arizona State University*

Godric of Finchale’s “Jerusalem Song” in Bibliothèque Mazarine MS 1716

■ Heather Blurton, *University of California, Santa Barbara*

6d. Dust and Bones: Death and Dying in Early Modern England

Palo Verde II-A

CHAIR: Allison Kavey, *City University of New York/CUNY, John Jay College and CUNY
Graduate Center*

“Your Quaint Honor Turn to Dust”: The Art of Living in Premodern England

■ Caitlin Mahaffy, *Indiana University, Bloomington*

Donne’s *Devotions* and a Body “sworn to say nothing”

■ Amanda Fowler, *University of North Carolina, Chapel Hill*

Exploring Social Ritual in Early Modern English Literature: Examining
Meditations upon Nature, Divinity, Science, and Death in Sir Thomas
Browne’s *Religio Medici* (1642) and *Hydriotaphia, or Urne-Buriall* (1658)

■ Emily Sharrett, *Loyola University Chicago*

FRIDAY, 8 FEBRUARY

***MAP Dinner Banquet*
and General Business Meeting***

6:30–8:30PM

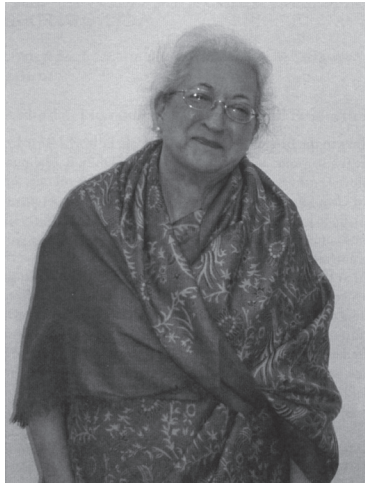
Canyon Room/East Pool Patio

* Banquet not included with conference registration.
Requires additional fee.

In loving memory of our dear colleague,

Dhira B. Mahoney

(1938–2019)



SATURDAY, 9 FEBRUARY

Session 7
9:00–10:30AM

7A. Masking and Unmasking

Palo Verde I

CHAIR: Leah Newsom, *Arizona State University*

#evetoo: Teaching *Paradise Lost* in the Shadow of Harvey Weinstein

■ Lisa Schnell, *University of Vermont*

Magical Moments of Transformation: Medieval Commentary on Toxic Masculinity

■ Bailey Flannery, *University of Wisconsin, Milwaukee*

The Transformative Magic of Cosplay; or, Furrries of Romance

■ Jacqueline Stuhmiller, *University of Wisconsin, Milwaukee*

7B. Spirits in a Material World

Painted Mountain Ballroom B

CHAIR: Carol Harding, *Western Oregon University*

Meteorology, Agency, the Writings of Gregory of Tours, and Agobard of Lyon

■ David Patterson, *University of Michigan, Ann Arbor*

Managing Labor and Landscape in Early Medieval Italy: Church of Ravenna and the Monastery of Farfa, 750–950

■ Edward M. Schoolman, *University of Nevada, Reno*

The Art of Constructing and Deconstructing “Sainthood”: A Close Study of Bede’s *Life of Cuthbert*

■ Sujata Chattopadhyay, *University of Nevada, Las Vegas*

SATURDAY, 9 FEBRUARY

Session 7

9:00–10:30AM

7C. Tempestuous Magic

Raven

CHAIR: Thomas Willard, *University of Arizona*

De natura Iudeorum magicæ: On the Nature of Jewish Magic in Shakespeare's The Tempest

■ Mark LaRubio, *Arizona State University*

Sir Thomas Browne and Faith in the Language of Nature: Alchemical Word-Magic in *The Winter's Tale*

■ Rana Banna, *University College London*

Prospero and the Making of a Medieval Magician in *The Tempest*

■ Chris Carlsen, *Arizona State University*

7D. On the Margins of Italian Cities

Palo Verde II-A

CHAIR: Monique O'Connell, *Wake Forest University*

Caveat Vendor: Illness and Fraud in the Genoese Slave Market

■ Hannah Barker, *Arizona State University*

Objectifying Witchcraft: The Material Culture of Late *Rinascimento* Venetian Magic

■ Anna Bennett, *University of Miami*

Demons or Saints: The Dilemma of How to Treat Lepers in Medieval Italian Towns

■ Susan Schmidt, *University of California, Santa Barbara*

SATURDAY, 9 FEBRUARY

Session 7
9:00–10:30AM

7E. Chronicling Political Power

Palo Verde II-B

CHAIR: Stefan Stantchev, *Arizona State University*

Diplomatic Devotion and the Chronicles of Edward IV

■ Noah Peterson, *Texas A&M University*

Winning Sieges and Seats: Divine and Political Election in *The Siege of Jerusalem*

■ Cara Hersh, *University of Portland*

The Queen's Historian: Fernando del Pulgar and the Transformation of Official History

■ Bretton Rodriguez, *University of Nevada, Reno*

Morning Break
10:30–10:45AM

Please join us next year for the
2020 Annual ACMRS Conference
“UNFREEDOM”

To be held on the campus of
Arizona State University in Tempe

February 6–8, 2020

More details will be available beginning in March at
acmrs.org/conference

SATURDAY, 9 FEBRUARY

Session 8

10:45AM–12:15PM

8A. Recipes for Success

Palo Verde I

CHAIR: Jane Hatter, *University of Utah*

The Diet of Medieval Saints: Mystery, Myth, and Marvels

■ Kevin P. Roddy, *University of California, Davis*

Oils and Waters: Chemical Science in Early Modern Women's Recipes

■ Ian MacInnes, *Albion College*

Wives as Husbandmen: Women in Beekeeping and the Scientific Gendering of the Bee in Early Modern Europe

■ Madeleine Ostwald, *Arizona State University*

8B. Science, Magic, and Philosophy

Painted Mountain Ballroom B

CHAIR: Jonathan Seitz, *Drexel University*

Albertus Magnus, Thomas Aquinas, and Rational Astrology

■ Scott Hendrix, *Carroll University*

Science and Magic in Second (Slavonic) Enoch

■ Eugene Clay, *Arizona State University*

SATURDAY, 9 FEBRUARY

Session 8

10:45AM–12:15PM

8C. Reinterpreting *Piers Plowman*

Raven

CHAIR: Richard Newhauser, *Arizona State University*

Working on a Translation of the A Version of *Piers the Plowman*

■ Michael Calabrese, *California State University, Los Angeles*

A Scribe Reads *Piers Plowman A*

■ Sarah Wood, *University of Warwick*

“How o lord mythe lyue o thre”: Understanding Langland’s Holy Trinity

■ Hayley Hampton, *Mississippi State University*

8D. The Early Modern Body Revisited

Palo Verde II-A

CHAIR: Susan J. Dudash, *Arizona State University*

Intersex and Transgender: Early Modern, Modern, and Postmodern Perspectives

■ Kathleen Long, *Cornell University*

“Love’s both parts”: Hermaphroditic Hermeneutics in Crashaw’s St. Teresa Poems

■ Courtney Price, *Texas A&M University*

Physiomachia: The Stomach’s Silent Voice in the *Farce nouvelle des cinq sens de l’homme*

■ Joyce King, *University of California, Santa Barbara*

SATURDAY, 9 FEBRUARY

Session 8

10:45AM–12:15PM

8E. Dante and Boccaccio

Palo Verde II-B

CHAIR: John M. Fyler, *Tufts University*

The Queer Hermitage of Rustico: *Decameron* Third Day, Tenth Story

■ Michael McVeigh, Jr., *Arizona State University*

Prophecy and Antica Stregoneria: The Episode of the Hag-Siren in *Purgatorio* XIX

■ Fiorentina Russo, *St. John's University*

Dante 2021: Unholy and Holy Violence, Silence, Names, Words

■ Dino Cervigni, *University of North Carolina, Chapel Hill, emeritus*

8F. Querying Boundaries of Knowledge

Wildfire

CHAIR: Ryan A. Kashanipour, *Northern Arizona University*

The World of Wonders, of Magic, Science, and Healing in Caesarius of Heisterbach's *Dialogus miraculorum* (c. 1240)

■ Albrecht Classen, *University of Arizona*

Alchemy and Science in the Hands of Medieval Man

■ Margarita Tascón González, *Independent Scholar*

Cyrano and Cardano: Magic as Science between Appropriation and Betrayal

■ Giuseppe Bruno-Chomin, *University of Pennsylvania*

Lunch on Your Own

12:15–2:00PM

ACMRS Advisory Board Meeting

(by invitation only)

12:30–1:45PM

Canyon Room

Afternoon Beverage Service: 3:30–5:30PM, Painted Mountain Ballroom A

FINAL DRAFT.

PROGRAM WILL BE AVAILABLE FOR DOWNLOAD AFTER THE CONFERENCE.

SATURDAY, 9 FEBRUARY

Session 9
2:00–3:30PM

9A. Medical Practices, Medical Cultures

Palo Verde I

CHAIR: Arlene Sindelar, *University of British Columbia*

Take Another Piece of My Heart: Organs and Excreta in Medicine and Drama

■ Sarah Owens, *Colorado Northwestern Community College*

Early Modern Midwives: Female Production of Knowledge in a Male-Dominated System

■ Baylee Staufenbiel, *University of Wyoming*

Exorcist, Apothecary, Apostate: Italian Healing Clerics and their Medicines

■ Jonathan Seitz, *Drexel University*

9B. Shakespeare Unplugged

Painted Mountain Ballroom B

CHAIR: Bradley Ryner, *Arizona State University*

“Be absolute for death”: Reflections on Shakespearean Desacralization

■ Andrew Barnaby, *University of Vermont*

Joan La Pucelle, the Catholic Queer in Shakespeare’s *1 Henry VI*

■ James Wermers, *Arizona State University*

Brazilian Adaptations of Shakespeare: “not where he eats, but where he is eaten”

■ Cristiane Busato Smith, *Global Shakespeares Electronic Archive, MIT*

SATURDAY, 9 FEBRUARY

Session 9
2:00–3:30PM

9c. New Constructions of Knowledge in the Early Modern Era

Raven

CHAIR: Matthew Rivera, *Independent Scholar*

“Too bold a presumption to limit God’s power”: John Locke on the Status of Newtonian Gravity

■ Michael White, *Arizona State University*

Constructed Tenor, Constructing the Composer, c. 1500

■ Jane Hatter, *University of Utah*

Sir Kenelm Digby and the Language of Chymistry

■ Seth Lobis, *Claremont McKenna College*

9d. Magic, Prophecy, and the Court

Palo Verde II-A

CHAIR: Michael Hanly, *Washington State University*

Bejeweled Jerusalem: Lapidaries and Apocalypse in Medieval England

■ Karen Gross, *Lewis & Clark College*

Allusive *Fontaines*, *Sicamors*, and *Pins* in the Prose *Lancelot*: Figurative Prophecies of Grail Piety

■ David King, *Stockton University*

From St. Peter’s in Beauvais to St. Peter’s in Constantinople: Sanctuaries for the Untranslated in Chrétien de Troyes’ *Cligès*

■ David Rollo, *University of Southern California*

SATURDAY, 9 FEBRUARY

Session 9 2:00–3:30PM

9E. Alchemy and Metaphysics in Early Modern England

Palo Verde II-B

CHAIR: Kevin P. Roddy, *University of California, Davis*

How to Read an Exploding Toad: Alchemical Zoomorphism in George Ripley and *Atalanta Fugiens*

■ Margaret Maurer, *University of North Carolina, Chapel Hill*

“I will the elements implore”: Alchemy in Hester Pulter and George Herbert’s Devotional Poetry

■ Tamara Mahadin, *Mississippi State University*

Between Aristotle and Epicurus: The Atomistic Concept of the Universe in Thomas Harriot and John Donne

■ Makiko Okamura, *Kyoto Prefectural University*

9F. On Witches and Witchcraft

Wildfire

CHAIR: Frederick Kiefer, *University of Arizona*

Were the Witches Guilty?

■ David Hawkes, *Arizona State University*

Outwitting Witches in Early-Modern Germany

■ W. David Myers, *Fordham University and Renaissance Quarterly*

“How Do You Know She is a Witch?”: Speech, Scotland, and the Definition of Witchcraft in the Sixteenth and Seventeenth Centuries

■ Sierra Dye, *University of Guelph*

Afternoon Break 3:30–3:45PM

SATURDAY, 9 FEBRUARY

Session 10

3:45–5:15PM

10A. Early Modern Women Innovators

Painted Mountain Ballroom B

SPONSORED BY: The Society for the Study of Early Modern Women (SSEMW) and Arizona Center for Medieval and Renaissance Studies (ACMRS)

CHAIR: Ayanna Thompson, *Arizona State University*

Tribalism and Civil War: Christine de Pizan, Innovation, and Sovereignty in 15th Century France

■ Kate Forhan, *University of Southern Maine*

Justice and Peace in the *Livre des Fais d'armes et de la chevalerie*

■ Susan J. Dudash, *Arizona State University*

Geraldine Heng's Reappraisal of Medieval Otherness in Theory and Practice

■ Markus Cruse, *Arizona State University*

10B. Rhetoric, Polemic, and Irrationality

Palo Verde I

CHAIR: Anita Obermeier, *University of New Mexico*

Discovering the Boy Crucifixion Genre

■ Roger Dahood, *University of Arizona*

"Hear me but speak": Rhetorical Witchcraft in *Arden of Faversham*

■ Marinela Golemi, *Arizona State University*

Pagan Philosophy and Veiled Polemic: Philippe Duplessis-Mornay's *De la verite de la religion chrestienne*

■ Andrew Wells, *Brigham Young University, Idaho*

SATURDAY, 9 FEBRUARY

Session 10

3:45–5:15PM

10c. Speak of the Devil

Raven

CHAIR: Cajsa C. Baldini, *Arizona State University*

Devils, the Divine, and the Dissolution of Identity in *Doctor Faustus*

■ Melissa Pullara, *Carleton University*

Marlowe's *Dr. Faustus* as a Renaissance Icarus

■ Emilio Álvarez Castaño, *Zhejiang Yuexiu University of Foreign Languages*

Milton's Satan in Malick's Cinema

■ Jonathan Olson, *Grand Canyon University*

10d. Chaucer Through Space and Time

Palo Verde II-A

CHAIR: Georgiana Donavin, *Westminster College*

"Through the world hyt was yknowe": Reading the Invisible Science of Air in Chaucer's *The House of Fame*

■ Michelle Brooks, *University of Massachusetts, Amherst*

Theseus's Amphitheater: Magic, Measurement, and the Manipulation of Time, Space, and Optics in Chaucer's *Knight's Tale*

■ Anne Scott, *Northern Arizona University*

Paratext and Interpretation in Speght's Seventeenth-Century Edition of *The Canterbury Tales*

■ C. Anne Laskaya, *University of Oregon*

Farewell Reception

(hors d'œuvres and open bar)

6:30–8:30PM

Canyon Room/East Pool Patio

INDEX OF PARTICIPANTS

A

Albertini, Alexandra W., 18
Alfie, Fabian, 2
Ali, Souad T., 8
Álvarez Castaño, Emilio, 34
Anderson, Joel, 20
Andrea, Bernadette, 2

B

Baldini, Cajsá C., 34
Banna, Rana, 25
Barker, Hannah, 2, 18, 25
Barnaby, Andrew, 30
Bennett, Anna, 25
Bess, Jennifer, 8, 15
Blurton, Heather, 2, 22
Bowen, William, 8
Brooks, Michelle, 34
Brown, Jessica, 14
Bruno-Chomin, Giuseppe, 29
Burdorff, Sara, 12
Busato Smith, Cristiane, 30

C

Caciola, Nancy, 18
Calabrese, Michael, 2, 11, 19, 28
Cappozzo, Valerio, 17
Carlsen, Chris, 25
Cervigni, Dino, 29
Chattopadhyay, Sujata, 24
Choin, Victoria, 22
Clapham, Andrew, 12
Classen, Albrecht, 29
Clay, Eugene, 27
Cohen, Jeffrey J., 18
Cruse, Markus, 2, 33

D

Dahood, Roger, 33
D'Arcens, Louise, 11
Davis-Secord, Sarah, 2
Despres, Denise, 21
Diggelmann, Lindsay, 11
Donavin, Georgiana, 19, 34
Dudash, Susan J., 2, 7, 28, 33
Dye, Sierra, 32

E

Emling, Rachel, 14

F

Flannery, Bailey, 24
Forhan, Kate, 33
Fowler, Amanda, 22

Fox, Cora, 2
Fyler, John M., 29

G

Gaida, Margaret, 16
Gluck, Andrew, 19
Golemi, Marinela, 33
Gonzalez Renteria, Mariana Ruiz, 20
Graham, Dr. Timothy, 7
Gross, Karen, 31
Grumbach, Elizabeth, 7

H

Halvorsen, Todd, 2
Hampton, Hayley, 28
Hanly, Michael, 17, 31
Harding, Carol, 24
Harrison, Anna, 2
Hartle, Paul, 15
Hatter, Jane, 27, 31
Hawkes, David, 32
Helfers, James, 13
Hendrix, Scott, 16, 27
Hersh, Cara, 26
Hodgson, Natasha, 11
Hollis, Crystal, 21
Hope, Jonathan, 10, 19
Huber, Robert, 16
Hutterer, Maile, 2

J

Jackson, Sarah-Nelle, 2
Janacek, Bruce, 10
Jimenez, Isidro Luis, 20
Johnston, Carrie, 8

K

Kashanipour, Ryan A., 2, 10, 29
Kavey, Allison, 19, 22
Kelly, Henry Ansgar, 18
Kenway, Jenessa, 14
Kiefer, Frederick, 32
King, David, 31
King, Joyce, 28
Knight, Dayanna, 20

L

Lange, Marjory, 13
LaRiviere, Katie Jo, 19
LaRubio, Mark, 25
Laskaya, C. Anne, 13, 34
Lobis, Seth, 31
Long, Kathleen, 28
Lota Brown, Meg, 2

INDEX OF PARTICIPANTS

M

MacInnes, Ian, 27
MacLellan, Rory, 22
MacLeod, Jason, 15
Mahadin, Tamara, 32
Mahaffy, Caitlin, 22
Mahrt, William, 21
Maring, Heather, 2, 14
Marino, Jerry, 16
Marshall, Simone, 11
Masiero, Francesca, 8
Maurer, Margaret, 32
McLoone, Katherine, 19
McVeigh, Jr., Michael, 29
Myers, W. David, 32

N

Najork, Daniel, 9
Narver, Annie, 15
Nelson, Bradley, 20
Newhauser, Richard, 13, 28
Newsom, Leah, 2, 24
Nodes, Daniel, 13
Norako, Leila Kate, 2
Noreen, Kirstin, 16

O

Obermeier, Anita, 33
O'Connell, Monique, 8, 25
Okamura, Makiko, 32
Oliver, Elisabeth, 21
Olson, Jonathan, 34
Ostwald, Madeleine, 27
Ott, John S., 2, 11, 18, 22
Owens, Sarah, 30

P

Patterson, David, 24
Perron, Anthony, 2, 11, 14
Peterson, Noah, 26
Price, Basil, 9, 20
Price, Courtney, 28
Price, Patricia, 13, 17
Pullara, Melissa, 34
Purkaple, Brent, 16

R

Rebe, Tristan, 9, 15
Reynolds, Maitlyn, 21
Rivera, Matthew, 14, 31
Roddy, Kevin P., 27, 32
Rodriguez, Bretton, 20, 26

Rollo, David, 31
Ross, Cordelia, 13
Rouse, Robert, 2
Rukkila, Roy, 2
Russo, Fiorentina, 29
Ryner, Bradley, 2, 30

S

Salomoni, David, 16
Saucier, Catherine, 2, 21
Schechter, Laura, 8
Schmidt, Susan, 25
Schnell, Lisa, 24
Schoolman, Edward M., 2, 11, 16, 24
Schrader, Angela, 2, 12
Scott, Anne, 2, 34
Seitz, Jonathan, 27, 30
Sharrett, Emily, 22
Sieg, George, 15
Siemens, Ray, 8, 10
Sindelar, Arlene, 2, 18, 30
Smith, J.A.T., 2, 11, 17
Stantchev, Stefan, 2, 26
Staufenbiel, Baylee, 30
Stesienko, Andrew, 15
Stuhmiller, Jacqueline, 24
Sturges, Robert, 8
Sutton, Jillian, 17, 21
Swedo, Elizabeth, 14

T

Tascón González, Margarita, 29
Thames, Jason, 17
Thompson, Ayanna, 2, 3, 7, 10, 33
Tomany, Claudia, 20

V

Valencia-Escobar, Alma, 17
Valiant, Seonaid, 7
Violette, Stephanie, 14

W

Wells, Andrew, 33
Wermers, James, 30
White, Michael, 31
Whitney, Elspeth, 2
Wilcox, Miranda, 2
Willard, Thomas, 25
Włodarczyk, Jarosław, 19
Wolfe, Jessica Lynn, 13
Wood, Sarah, 28



ACMRS ASMAR CONFERENCE VOLUME



ACMRS is pleased to invite submissions to its annual ASMAR (Arizona Studies in in the Middle Ages and the Renaissance) volume, published by Brepols Publishers, Belgium.

Scholars who are presenting their research at the joint conference of ACMRS and MAP (Medieval Association of the Pacific) in February 2019 and wish to have their work considered for publication should plan to submit the following no later than

May 15, 2019

to the volume editor, Ryan A. Kashanipour at
RA.Kashanipour@nau.edu

1. an abstract of no more than 150 words;
2. their revised contribution of approximately 25–30 pages in length, including footnotes; and
3. a current *curriculum vitae*.

Submissions should focus on the general theme of *Magic, Religion, and Science in the Global Middle Ages and Renaissance*, conform to the latest (17th) edition of *The Chicago Manual of Style*, and use footnotes rather than end notes.

Authors whose work has been accepted for publication will be provided with ACMRS' current Style Guide. Each volume undergoes rigorous peer review, including final approval by the Editorial Board of ACMRS Publications.

Queries?

Please contact this year's volume editor, Dr. Ryan A. Kashanipour, at
RA.Kashanipour@nau.edu

For general queries between volume years,
please contact Dr. Susan J. Dudash at
susan.dudash@asu.edu

BREPOLS PUBLISHERS

